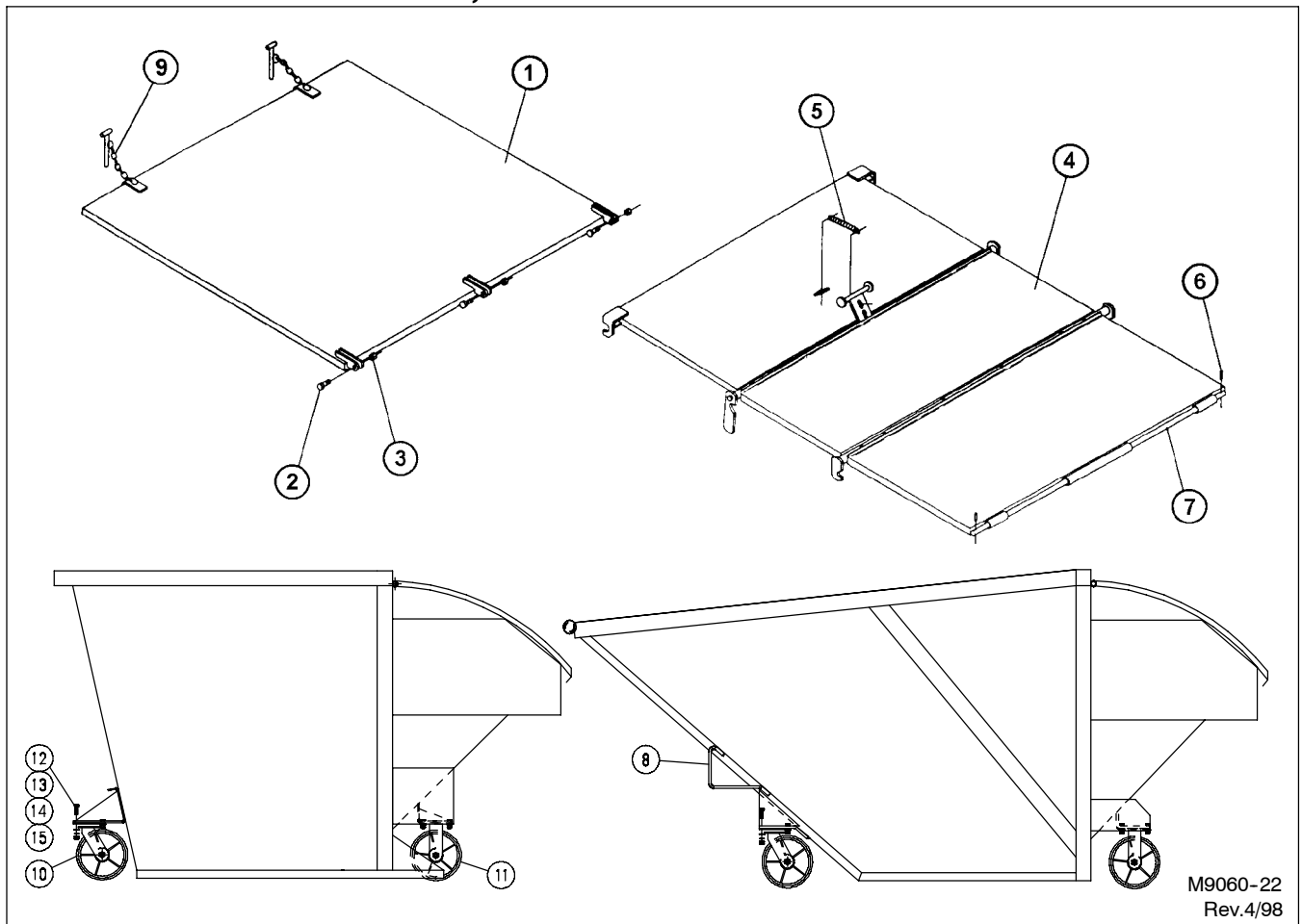


# TANK LIDS, REAR STEP AND WHEELS

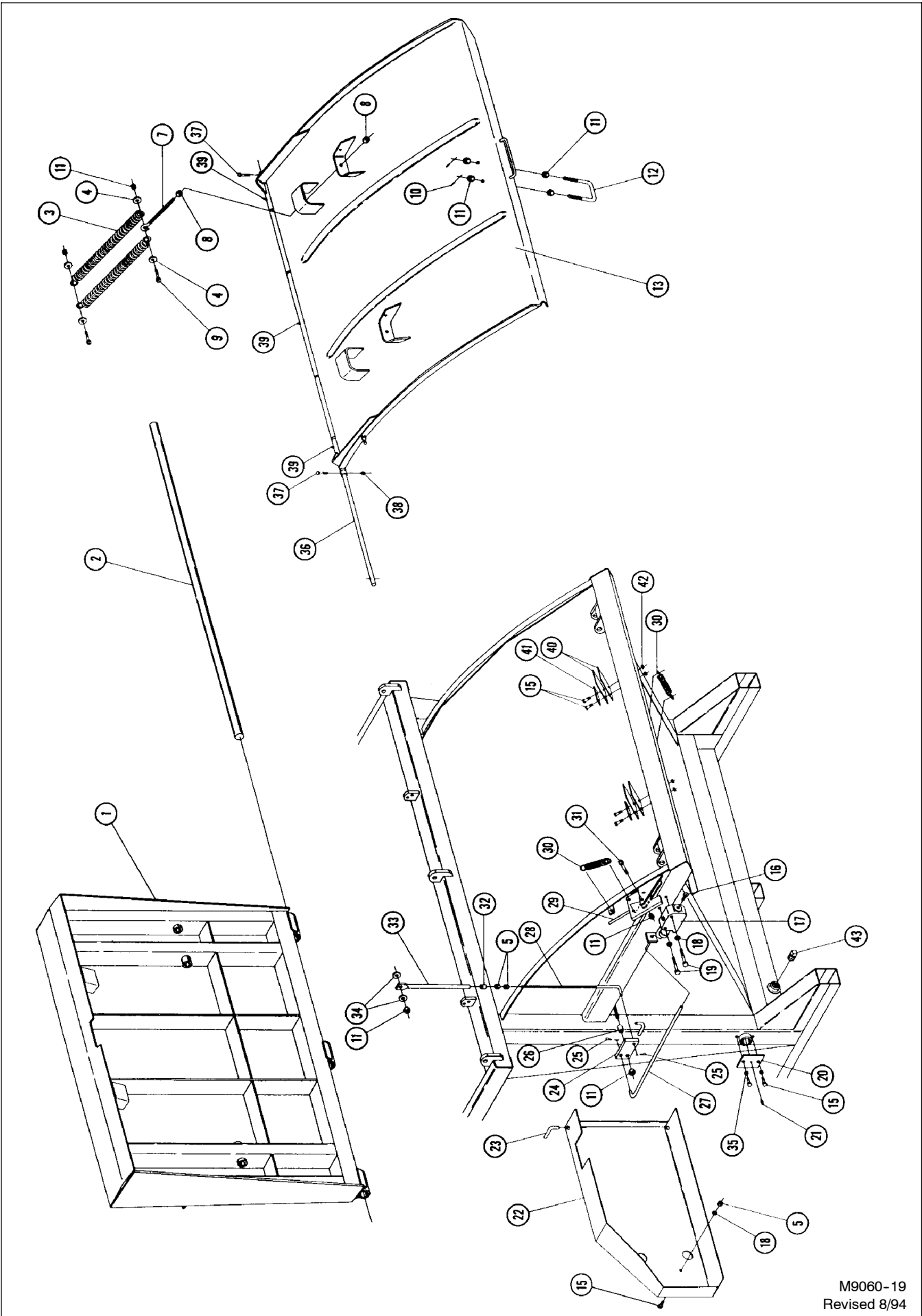


M9060-22  
Rev.4/98

## FOR MODELS - KP4F, KP6F, KP6R

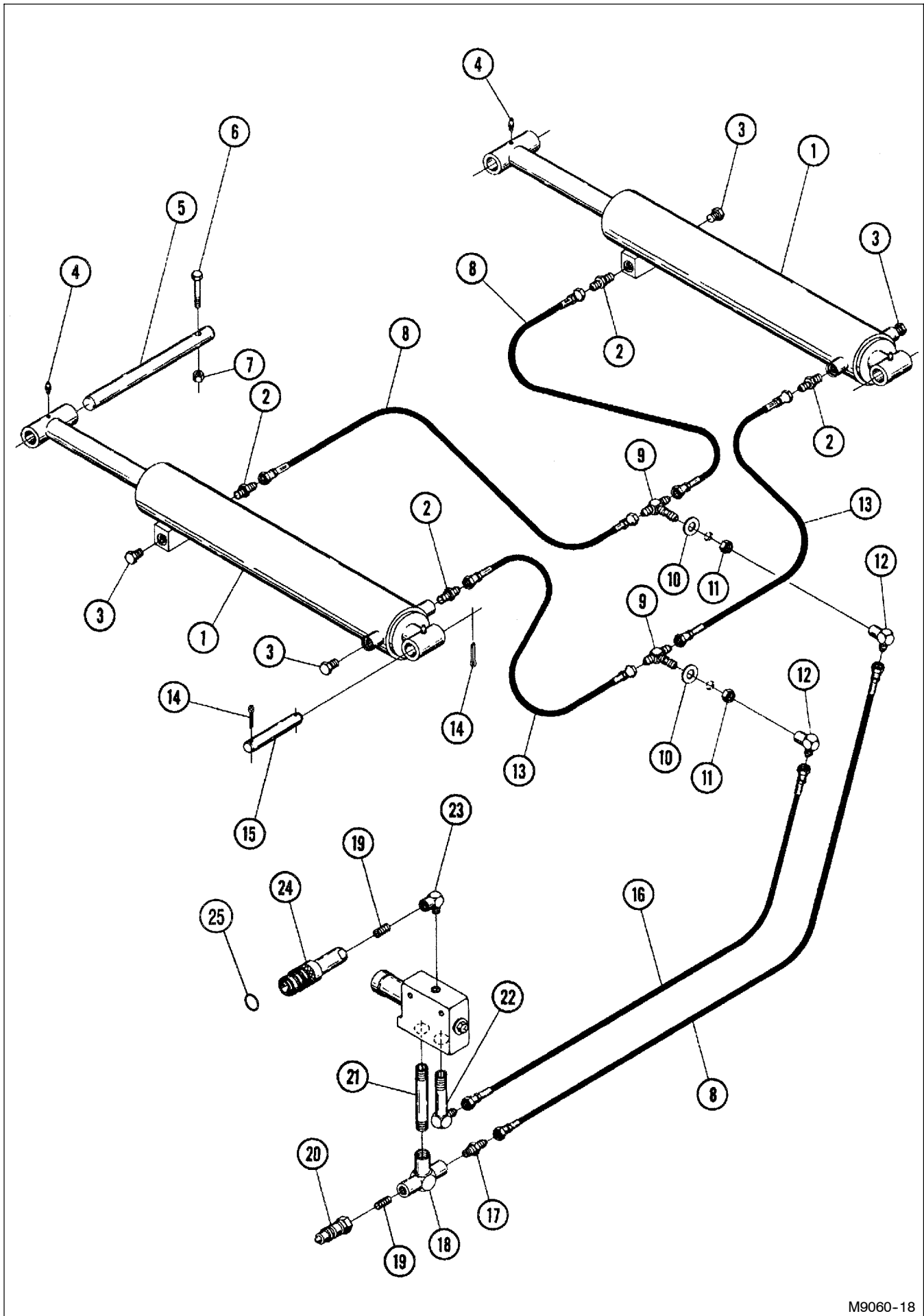
4/98

Item	Part Number	Part Description	Qty.
1	9040-16-0	Tank Lid Weldment (KP4F - Front Load)	1
	9060-16-0	Tank Lid Weldment (KP6F - Front Load)	1
2	62-169	5/8NC x 2" GD. 5 Cap Screw	3
3	63-110	5/8NC Self Locking Nut	3
4	9061-16-0	Rear Tank Lid Assembly (KP6R - Rear Load)	1
5	76-180	Extension Spring	1
6	60-626	3/16" DIA. x 1-1/2" Roll Pin (Steel)	2
7	9061-1-1	Lid Shaft	1
8	9061-1-2	Rear Step	1
9	9060-17-0	Handle Weldment	1
10	82-151	Swivel Castor Wheel	2
11	82-152	Rigid Castor Wheel	2
12	62-136	1/2NC x 1-1/2" Cap Screw	16
13	64-108	1/2" STD. Flat Washer	16
14	64-107	1/2" STD. Lock Washer	16
15	63-106	1/2NC Hex Nut	16



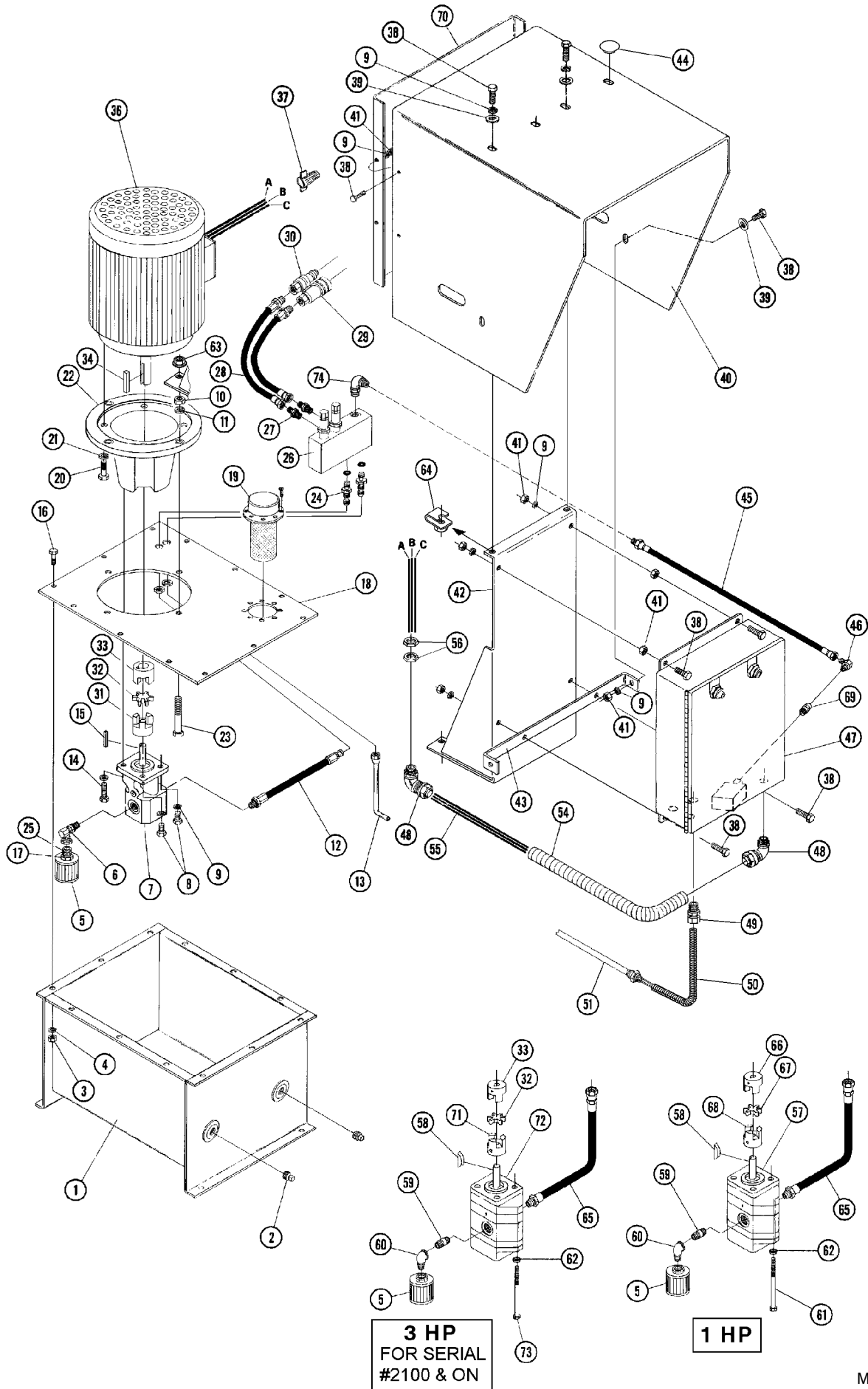
M9060-19  
 Revised 8/94





M9060-18





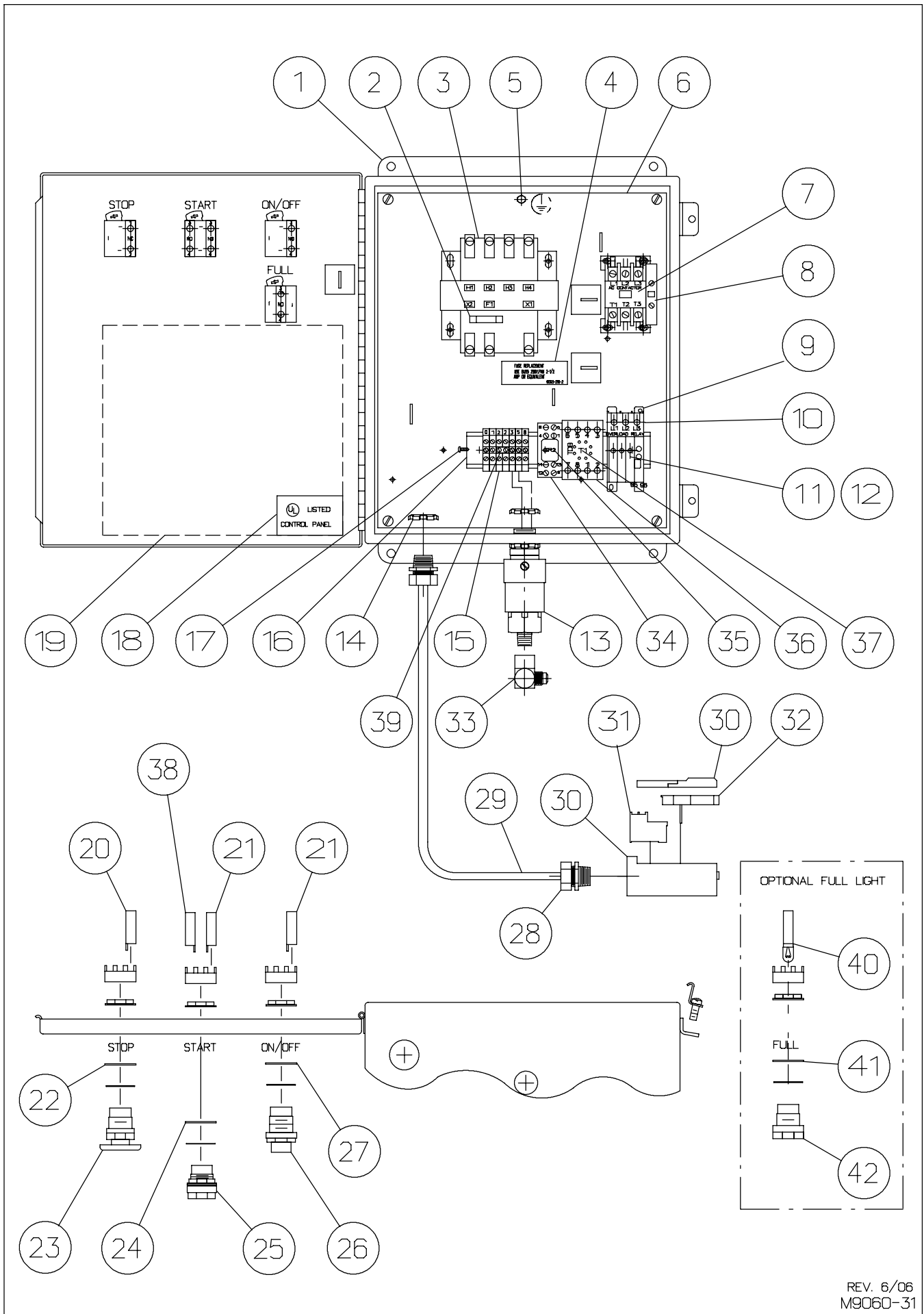
M9060-1  
Rev.6/99

# POWER UNIT ASSEMBLY

FOR MODELS - ALL

9/05

Item	Part Number	Part Description	Qty.	Item	Part Number	Part Description	Qty.
1	9003-2-0	Tank Weldment	1	45	24-514R	1/4" DIA. x 22" Hydraulic Hose	1
2	75-101	1/2NPT Pipe Plug	2	46	25-409	1/4NPT x 1/2" JIC Fitting	1
3	63-100	1/4NC Hex Nut	12	47		Power Panel	1
4	64-100	1/4" STD. Lock Washer	12	48	79-223	1/2" x 90° Electrical Adapter	2
5	25-232	Sump Filter	1	49	79-273	Conduit Connector	1
6	☆ 25-159	1/2NPT(F) 7/8"O-Ring 90° Elbow	1	50	9110-30-2	Wire Shield	1
7	☆ 25-219	Pump	1	51	79-408	Cartridge Heater & Thermostat	1
8	☆ 62-486	5/16NC x 3/4" GD. 5 Cap Screw	2	52			
9	64-148	5/16" STD. Lock Washer	16	53			
10	63-106	1/2NC Hex Nut	4	54	■ 79-196	1/2" Liquitite Flex Metal Hose 10"	1
11	64-107	1/2" STD. Lock Washer	4	55		Electrical Wire	
12	☆ 24-269R	3/8" DIA. x 16" Hydraulic Hose	1	56	79-229	Washer	2
13	24-422	3/8" DIA. x 8" Tube Return	1	57	□ 25-241	Two-Stage Pump	1
14	☆ 62-432	5/16NC x 1" GD. 5 Cap Screw	2	58	♣ 69-107	3/32" x 1/2" Woodruff Key	1
15	☆ 69-104	Key	1		♣ 69-103	1/8" x 1/2" Woodruff Key	1
16	62-507	1/4NC x 3/4"GD5 Cap Screw	12	59	□● 75-152	3/4NPT Close Nipple	1
17	☆ 75-135	3/4NPT - 1/2NPT Reducer	1	60	□● 75-153	3/4NPT Street Elbow	1
18	9003-1-1	Tank Cover	1	61	□ 62-497	5/16NC x 5-1/2" GD.5 Bolt	2
19	25-215	Filler Breather	1	62	□● 64-148	5/16" STD. Lock Washer	2
20	▲ 62-414	1/2NC x 1-3/4" GD. 5 Cap Screw	4	63	63-146	1/2NC Hex Flange Serrated Nut	3
	□ 62-436	3/8NC x 1-1/4"GD5 Cap Screw	4	64	82-300	5/16" NC Retainer Nut	2
21	▲ 64-107	1/2" STD. Lock Washer	4	65	□● 24-270R	Hose 14-1/4" Long x 3/8" DIA.	1
	□ 64-103	3/8" STD. Lock Washer	4	66	□ 82-116	Coupler (Serial # 1083 & On)	1
22	▲ 9003-1-5	Mounting Bracket	1		□ 82-110	Coupler (Serial # 1001-1082)	1
	□ 9001-1-5	Mounting Bracket	1	67	□ 82-115	Spider (Serial # 1083 & On)	1
23	62-151	1/2NC x 3"GD5 Cap Screw	4		□ 82-104	Spider (Serial # 1001-1082)	1
24	25-330	9/16 O-Ring to 9/16JIC Union	2	68	□ 82-117	Coupler (Serial # 1083 & On)	1
25	☆ 75-131	1/2NPT Close Nipple	1		□ 82-113	Coupler (Serial # 1001-1082)	1
26	25-217	Control Valve	1	69	25-180	1/4NPT Female Coupler	1
27	25-331	Adapter Fitting	2	70	9003-4-2	Back Panel	1
28	24-374R	1/2" DIA. x 144" Hydraulic Hose	2	71	♣ 82-307	3HP Hi-Lo Coupler <b>3/32 Keyway</b>	
29	25-2293	Female Coupler Industrial -Retract	1		● 82-215	3HP Hi-Lo Coupler <b>1/8 Keyway</b>	1
30	25-2292	Male Coupler Industrial - Extend	1	72	● 25-2270	3HP Hi-Lo Pump	1
31	☆ 82-103	Coupler	1	73	● 62-617	5/16NC x 6" GD. 5 Cap Screw	2
32	▲ 82-104	Spider	1	74	25-385	9/16(M)O-Ring to 1/2JIC(M) 90°	1
33	▲ 82-102	Coupler	1		□	Part used on 1HP Power Unit	
34	▲ 69-105	Key	1		▲	Part used on 3HP Power Unit	
	□ 69-106	Key	1		☆	Part used on 3 HP Power Unit Ser. # 1001 - 2099	
35					●	Used for 3 HP Serial No. 2100 & On	
36	▲ 79-197	Motor (3HP - Three Phase)	1		■	This is a bulk quantity item. You must specify length required when ordering.	
	□ 79-246	Motor (1HP - Single Phase)	1		♣	<b>IMPORTANT:</b> When ordering Item 58 Woodruff Key & Item 71 Pump Coupler note there are 2 different sizes available. Measure the keyway on your pump shaft to determine size needed before ordering.	
37	79-228	Wire Nut	4				
38	62-432	5/16NC x1"GD5 Cap Screw	12				
39	64-102	5/16" STD. Flat Washer	4				
40	9003-4-1	Hood	1				
41	63-135	5/16NC Hex Nut	12				
42	9003-0-1	Mounting Plate	1				
43	9003-208-2	Lower Mounting Bar	1				
44	44-206	Plug	1				



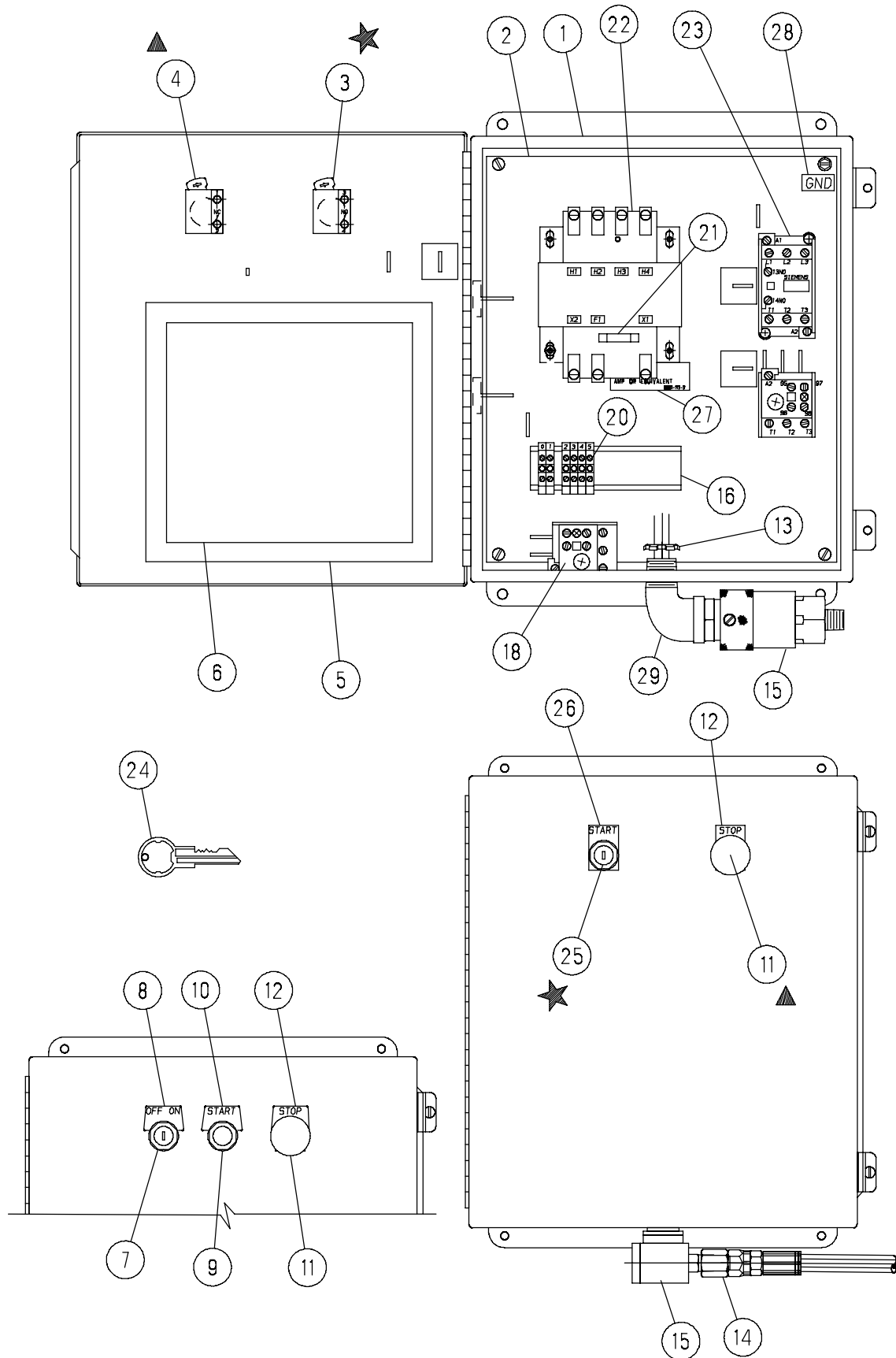
REV. 6/06  
M9060-31

## 3-PHASE POWER PANEL (SERIAL #3000 & ON)

**FOR MODELS - KP4F, KP6F, KP6R NOTE POWER PACK SERIAL NUMBERS LISTED**

12/06

<i>Item</i>	<i>Part Number</i>	<i>Part Description</i>	<i>Qty.</i>
1	79-198	Control Box (UL)	1
2	79-203	Fuse 2-1/2 Amp	1
3	79-226	Transformer	1
4	9003-210-2	Fuse Replacement Label	1
5	63-242	#10 Hex Nut	1
6	9010-210-2	Relay Panel	1
7	79-339	AC Contactor 10HP (CH)	1
8	79-338	Auxiliary Contact	1
9	79-337	Din Rail & Panel Adapter (3 Phase)	1
10	79-334	Overload Relay (.283-32. AMP)	1
11	79-567	Heater Pack ((3.23-5.23 AMP)	1
12	79-518	Heater Pack (6.75-11.0 AMP)	1
13	25-2534	Pressure Switch	1
14	79-218	1/2NPTS Lock Nut	2
15	79-344	1 Pole Terminal Block (Size 4)	
16	9010-210-4	Terminal Mounting Strip	1
17	62-494	#8NC x 1/2" Cross Pan Head Thread Cutting Screw	6
18	79-298	UL Control Panel Label	1
19		Electrical Schematic	1
20	79-353	N.C. Contact Block	1
21	79-352	N.O. Contact Block	2
22	79-322	Legend Plate - STOP	1
23	79-482	Mushroom Operator, 2 Position - STOP	1
	79-346	Mushroom Operator - STOP	1
24	79-320	Legend Plate - START	1
25	79-512	Green Operator - START	1
26	79-425	Keyed 2-Position Switch, Maintained	1
27	79-426	Legend Plate - ON/OFF	1
28	79-273	Adapter 3/8 Cord-1/2 Pipe Liquitite	
29	79-407	Wire #14/3 Type SJ0 (Bulk)	12ft.
30	79-455	Scanner Block (2 Pieces)	1
31	79-456	Power Block, AC (#PBA)	1
32	79-488	Logic Module, Repeat Cyclor	1
33	25-404	1/2JIC (M) - 1/4NPT (F) 90° Fitting	1
34	■ 79-358	Relay Socket	1
35	■ 79-357	Relay	1
36	■ 79-501	Timer Base	1
37	■ 79-340	Timer 8-Pin (Delay on Break)	1
38	■ 79-354	N.O. Early Close Contact Block	1
39	■ 79-359	Link Rail, 2 Terminal	1
40	■ 79-348	Pilot Light, 120V	1
41	■ 9010-211-2	Legend Plate, Full	1
42	■ 79-349	Amber Lens, Pilot Light	1
■ Part of Full Light Option			



**3 BUTTON STYLE**

**2 BUTTON STYLE**

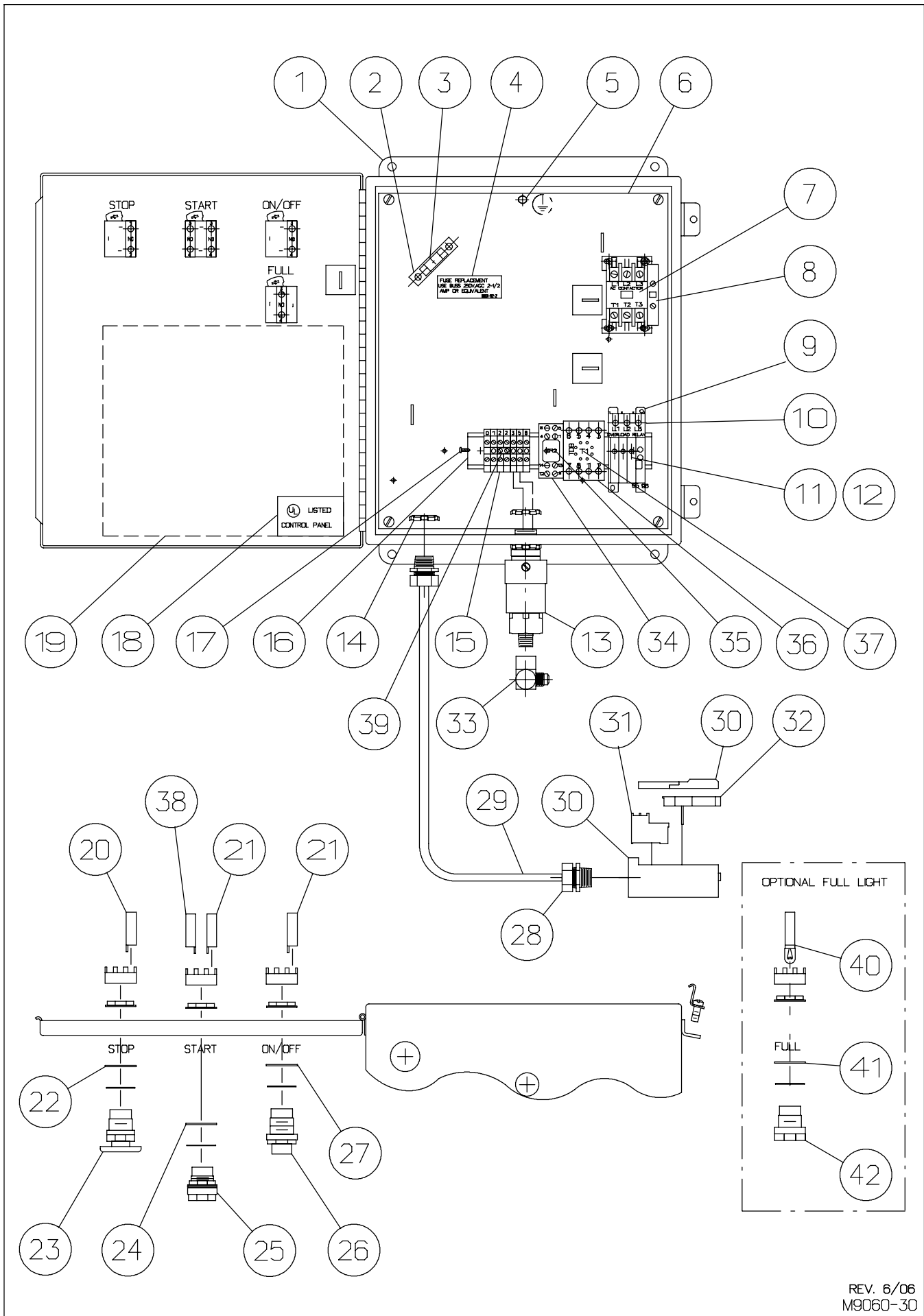
REV. 9/05  
M9060-29

## 3-PHASE POWER PANEL

**FOR MODELS - KP4F, KP6F, KP6R NOTE POWER PACK SERIAL NUMBERS LISTED**

9/05

Item	Part Number	Part Description	Qty.
1	79-198	Control Box	1
2	9110-110.220-3	Relay Panel	1
3	79-352	N.O. Contact Block (Serial # 1558 & On)	1
	79-241	Contact Block - Key Start (Serial # 1001 - 1557)	1
4	79-353	N.C. Contact Block (Serial # 1558 & On)	1
	79-242	Contact Block - Stop (Serial # 1001 - 1557)	1
5	9001-110-3	Plastic Seal	1
6		Electrical Schematic Specify Serial No. & Voltage	1
7	79-425	OPERATOR / KEY Contact	1
8	79-426	OFF / ON Name Plate	1
9	79-512	OPERATOR / START Button	1
10	79-320	START Name Plate	1
11	79-346	Mushroom Operator - Stop (Serial # 1558 & On)	1
12	79-322	Legend Plate - Stop (Serial # 1558 & On)	1
13	79-218	1/2NPS Lock Nut	2
14	25-409	1/2(M)JIC to 1/4(F)NPT Straight Fitting	1
15	25-2534	Pressure Switch	1
16	9003-213-1	Terminal Mounting Strip (Serial # 1558 & On)	1
	9003-3-2	Terminal Mounting Strip (Serial # 1001 - 1557)	1
17	79-207	End Clamp (Serial # 1001 - 1557)	2
18	○ 79-244	Overload Relay (8 - 12.5) (Serial #1001-2999)	1
	● 79-245	Overload Relay (4 - 6.3) (Serial #1001-2999)	1
19	79-206	End Barrier (Serial # 1001 - 1577)	2
20	79-344	Terminal Block (Serial # 1558 & On)	5
	79-204	Terminal Box Lug (Serial # 1001 - 1557)	5
21	79-202	1/2 Amp Fuse (Serial # 1001 - 1517)	1
	★ 79-203	FNM 2-1/2 Amp Fuse	1
22	★ 79-226	Transformer	1
23	79-243	AC Contactor (Serial #1001-2999)	1
24	79-387	Switch Key (CH) (Serial # 1558 & On)	1
	79-249	Switch Key (E10) (Serial # 1001 - 1557)	1
25	79-345	Keyed 2-Position Switch (Serial # 1558 & On)	1
	79-256	Operator / Key Start (Serial # 1083 - 1557)	1
26	79-320	Legend Plate START (Serial # 1558 & On)	1
	9001-112-1	Key Start Name Plate (Serial # 1001 - 1557)	1
27	★ 9003-210-2	Fuse Replacement Decal	1
28	9001-112-3	Ground Decal	1
29	75-174	Elbow	1
<ul style="list-style-type: none"> <li>○ 208 Volt, 230 Volt</li> <li>● 460 Volt</li> <li>★ For units with heater (Serial # 1001 - 1517)</li> <li>★ For all units (Serial # 1518 &amp; On)</li> </ul>			



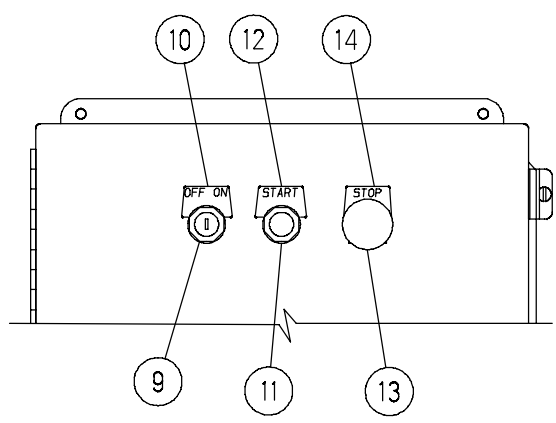
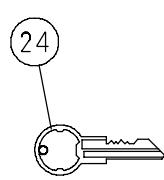
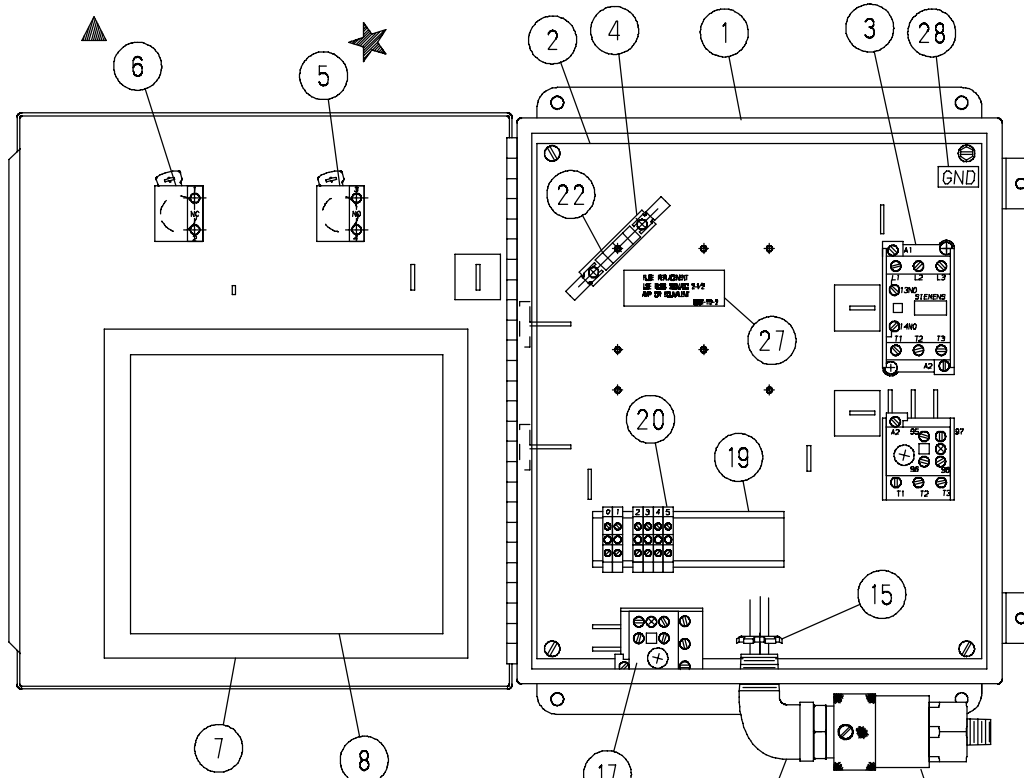
REV. 6/06  
M9060-30

# SINGLE PHASE POWER PANEL (SERIAL # 3000 & ON)

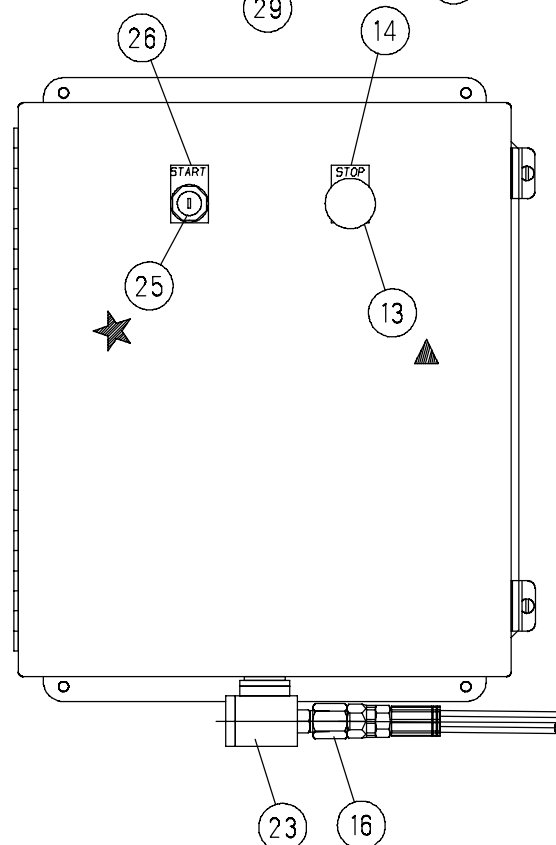
**FOR MODELS - KP4F, KP6F, KP6R NOTE POWER PACK SERIAL NUMBERS LISTED**

12/06

<i>Item</i>	<i>Part Number</i>	<i>Part Description</i>	<i>Qty.</i>
1	79-198	Control Box	1
2	79-271	Fuse Holder (UL Approved)	1
3	79-227	Fuse 2-1/2 Amp	1
4	9001-112-2	Fuse Replacement Label	1
5	63-242	#10 Hex Nut	1
6	9010-210-2	Relay Panel	1
7	79-339	AC Contactor 10 HP (CH)	1
8	79-338	Auxiliary Contact	1
9	79-337	Din Rail & Panel Adapter (3 Phase)	1
10	79-334	Overload Relay (.283-32.ANP)	1
11	79-518	Heater Pack (6.75-11.0 AMP)	1
12	79-335	Heater Pack (14.0-21.7 AMP)	1
13	25-2534	Pressure Switch	1
14	79-218	Lock Nut 1/2NPTS	1
15	79-344	1 Pole Terminal Block (Size 4)	
16	9010-210-4	Terminal Mounting Strip	1
17	62-494	#8NC x 1/2" Cross Pan Head Threaded Screw	1
18	79-298	UL Control Panel Label	1
19		Electrical Schematic	1
20	79-353	N.C. Contact Block	1
21	79-352	N.O. Contact Block	2
22	79-322	Legend Plate - STOP	1
23	79-346	Mushroom Operator - STOP	1
	79-482	Operator, 2 Position Mushroom	1
24	79-320	Legend Plate - START	1
25	79-512	Green Operator, START	1
26	79-425	Keyed 2-Position Switch, Maintained	1
27	79-426	Legend Plate - ON/OFF	1
28	79-273	Adapter 3/8 Cord-1/2 Pipe Liquitite	
29	79-407	Wire #14/3 Type SJO (Bulk)	12ft.
30	79-455	Scanner Block (2 Pieces)	1
31	79-456	Power Block, AC (#PBA)	1
32	79-488	Logic Module, Repeat Cyclor	1
33	25-404	1/2JIC (M) - 1/4NPT (F) 90° Fitting	1
34	■ 79-358	Relay Socket	1
35	■ 79-357	Relay	1
36	■ 79-501	Timer Base	1
37	■ 79-340	Timer 8-Pin (Delay on Break)	1
38	■ 79-354	N.O. Early Close Contact Block	1
39	■ 79-359	Link Rail, 2 Terminal	1
40	■ 79-348	Pilot Light, 120V	1
41	■ 9010-211-2	Legend Plate, Full	1
42	■ 79-349	Amber Lens, Pilot Light	1
■ Part of Full Light Option			



**3 BUTTON STYLE**



**2 BUTTON STYLE**

REV. 9/05  
M9060-28

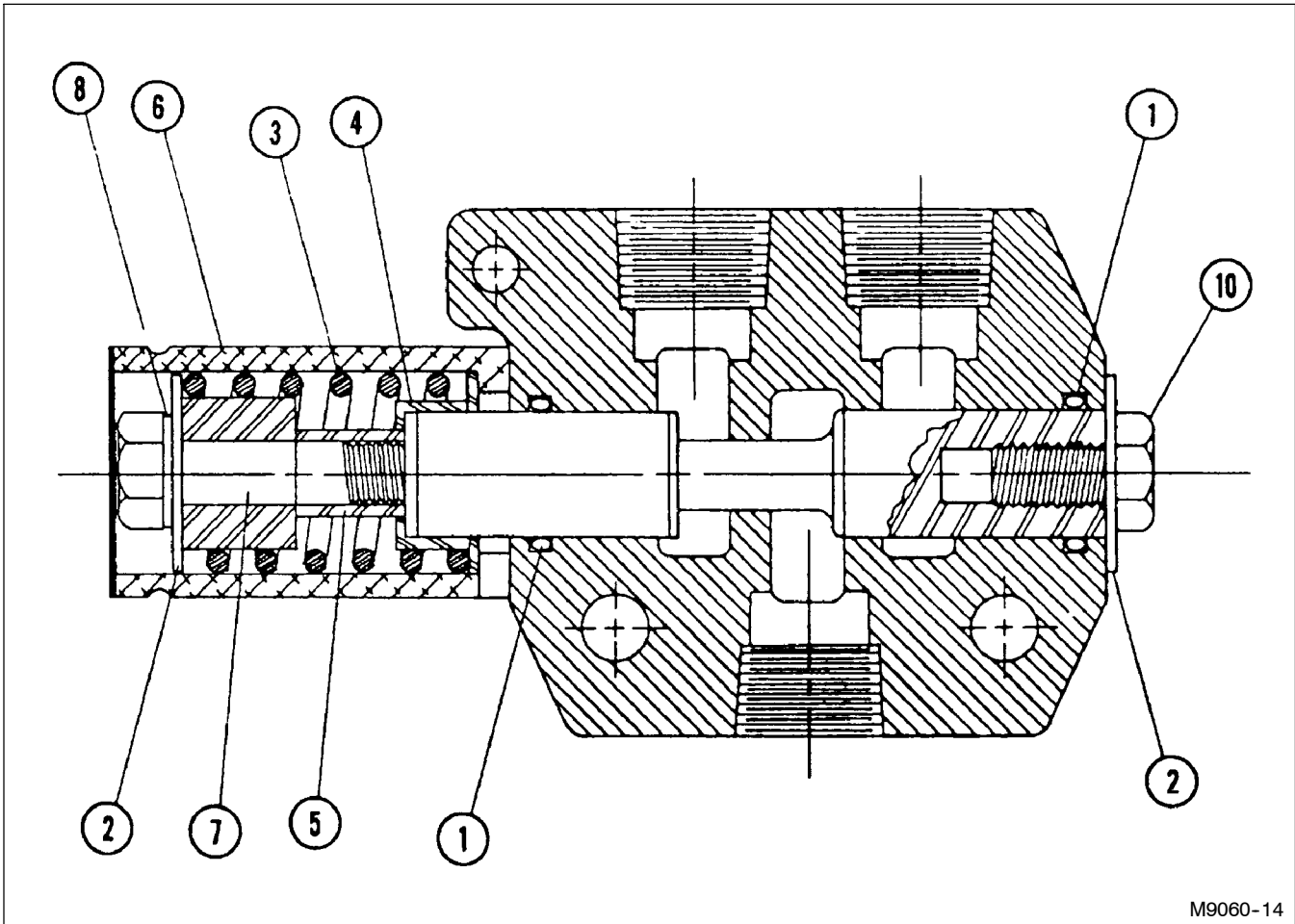
# SINGLE PHASE POWER PANEL

**FOR MODELS - KP4F, KP6F, KP6R NOTE POWER PACK SERIAL NUMBERS LISTED**

9/05

Item	Part Number	Part Description	Qty.
1	79-198	Control Box	1
2	9110-110.220-2	Relay Panel	1
3	☆● 79-251	AC Contactor (Serial # 1518-2999)	1
	○ 79-243	AC Contactor (Serial # 1001 - 1517)	1
4	79-271	Fuse Holder	1
5	79-352	N.O. Contact Block (Serial # 1558 & On)	1
	79-241	Contact Block - Stop (Serial # 1001 - 1557)	1
6	79-353	N.C. Contact Block (Serial # 1558 & On)	1
	79-242	Contact Block - Stop (Serial # 1001 - 1557)	1
7	9001-110-3	Plastic Seal	1
8		Electrical Schematic - Specify Serial # and Voltage	1
9	79-425	OPERATOR / KEY Contact	1
10	79-426	OFF / ON Name Plate	1
11	79-512	OPERATOR / START Button	1
12	79-320	START Nameplate	1
13	79-346	Mushroom OPERATOR / STOP (Serial # 1558 & On)	1
	79-208	RED OPERATOR / STOP Button (Serial # 1001 - 1557)	1
14	79-322	Legend Plate - STOP (Serial # 1558 & On)	1
	79-211	STOP Nameplate (Serial # 1001 - 1557)	1
15	79-218	1/2NPS Lock Nut	2
16	25-409	1/2(M)JIC to 1/4(F)NPT Straight Fitting	1
17	○ 79-362	Overload Relay (Serial # 1518 - 2999)	1
	☆ 79-247	Overload Relay (12.5 - 20) (Serial # 1001 - 2999)	1
	○ 79-244	Overload Relay (8 - 12.5) (Serial # 1001 - 1517)	1
18	79-207	End Clamp (Serial # 1001 - 1557)	2
19	9003-213-1	Terminal Mounting Strip (Serial # 1558 & On)	1
	9003-3-2	Terminal Mounting Strip (Serial # 1001 - 1557)	1
20	79-344	Terminal Block (Serial # 1558 & On)	1
	79-204	Terminal Box Lug (Serial # 1001 - 1557)	1
21	79-206	End Barrier (Serial # 1001 - 1557)	1
22	79-227	2-1/2 Amp Fuse	1
23	25-2534	Pressure Switch	1
24	79-387	Switch Key - (CH) (Serial # 1558 & On)	1
	79-249	Switch Key - (E-10) (Serial # 1001 - 1557)	1
25	79-345	Keyed 2-Position Switch (Serial # 1558 & On)	1
	79-256	Operator / Key Start (Serial # 1083 - 1557)	1
26	79-320	Legend Plate START (Serial # 1558 & On)	1
	9001-112-1	Key Start Nameplate (Serial # 1001 - 1557)	1
27	9001-112-2	Fuse Replacement Decal	1
28	9001-112-3	Ground Decal	1
29	75-174	Ebow	1
☆ 110 Volt ○ 220 Volt ● For 110 Volt and 220 Volt (Serial # 1518 & On)			

# SELECTOR VALVE ASSEMBLY



M9060-14

## FOR MODELS - 25-213 Selector Valve

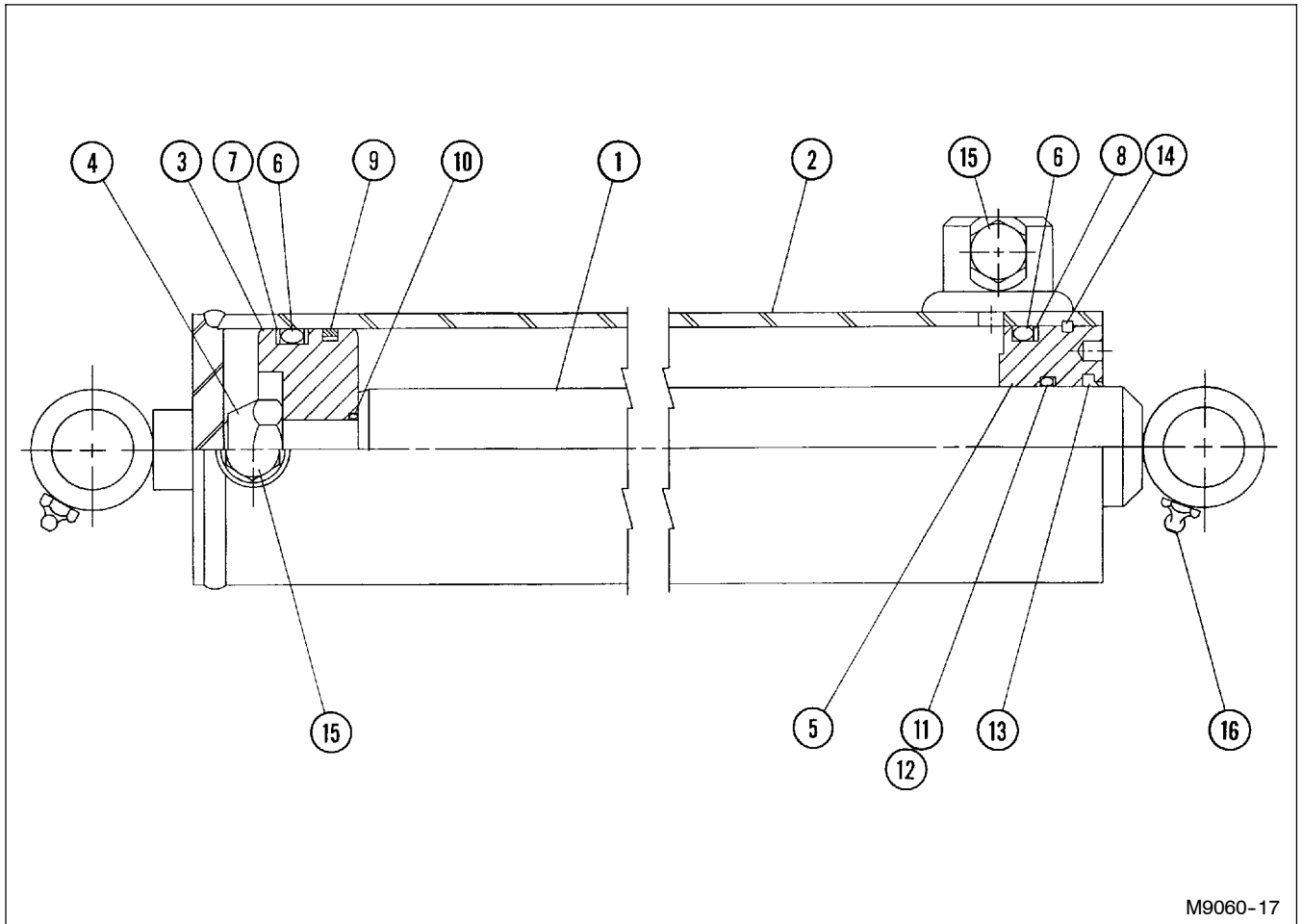
10/98

Item	Part Number	Part Description	Qty.
1		O-Ring	2
2		Special Washer	2
3		Spring	1
4		Spool Stop	1
5		Spacer	1
6		Spring Cover	1
7	62-501	3/8NF x 2" Cap Screw	1
8	64-103	3/8" SAE Lock Washer	1
9			
10	62-491	3/8NF x 3/4" GD. 5 Cap Screw	1





# PRINCE HYDRAULIC CYLINDER ASSEMBLY

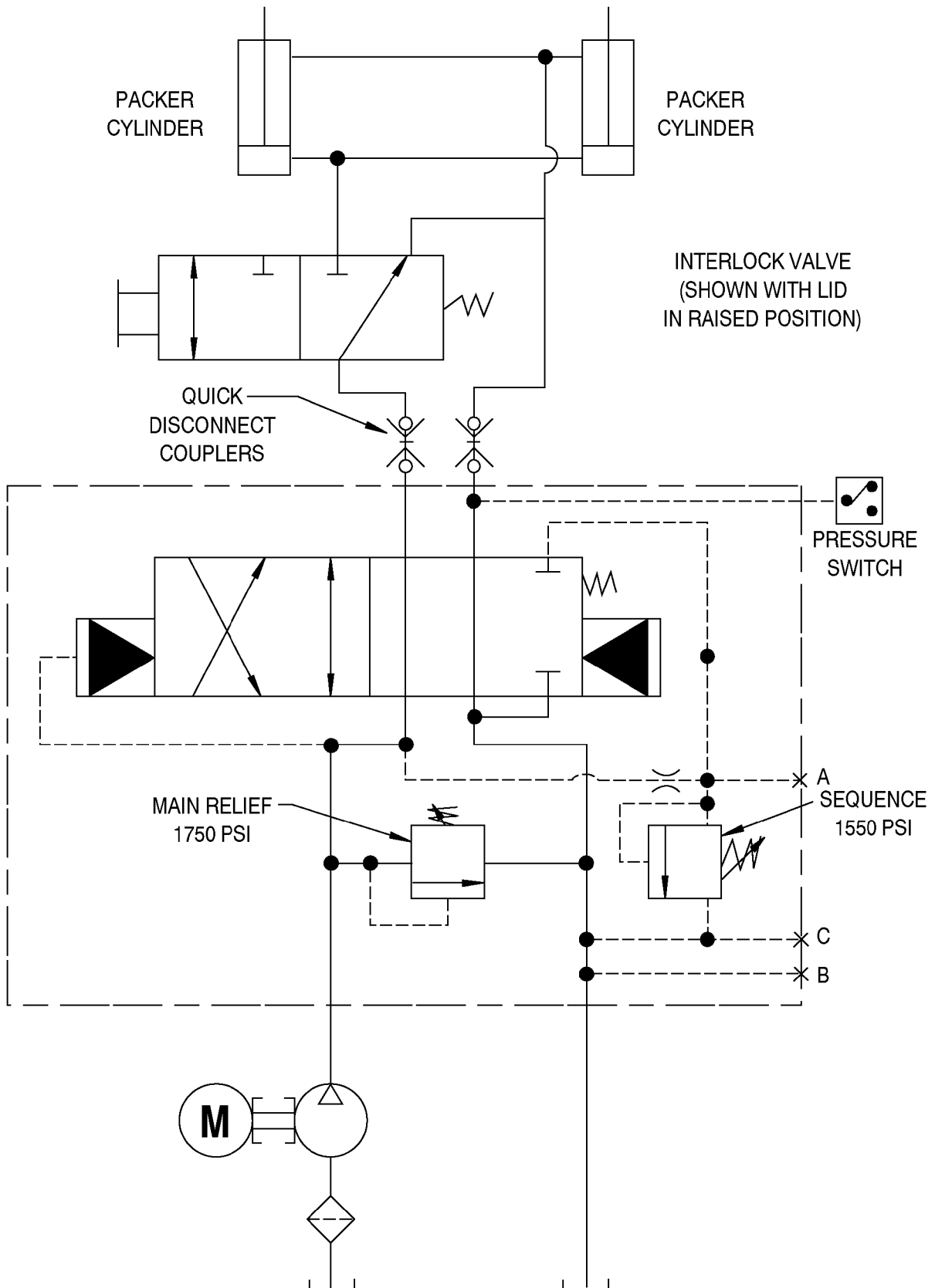


M9060-17

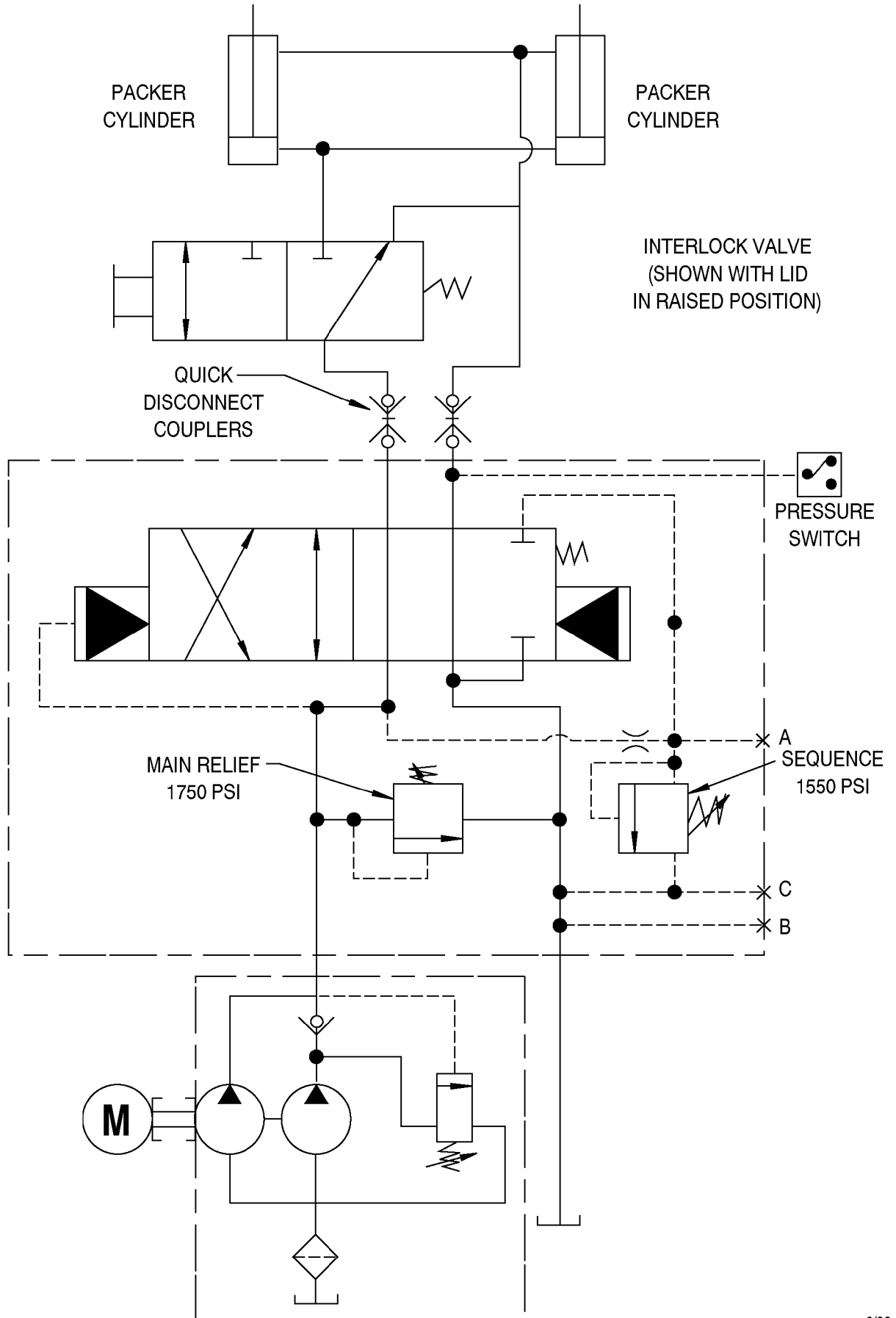
21-149 3" x 16-1/8" Prince Hydraulic Cylinder Assembly 10/98  
 Retracted - 22" Extended - 38-1/8" Stroke - 16-1/8" Rod Diameter - 1-1/2"

Item	Part Number	Part Description	Qty.
1	21-613	Piston Rod Assembly	1
2	☆	Butt and Tube Assembly	1
3	21-615	Piston	1
4	21-209	Lock Nut	1
5	21-616	Gland	1
6	●	O-Ring	2
7	●	Back-Up Washer	2
8	●	Back-Up Washer	1
9	●	Bearing Ring	1
10	●	O-Ring	1
11	●	O-Ring	1
12	●	Back-Up Washer	1
13	●	Wiper	1
14	●	Square Retaining Ring	1
15	21-620	Port Plug	2
16	21-534	Zerk	2
	21-612	Seal Kit ( ● Items Included In Kit)	
☆ Part not available for repairs			

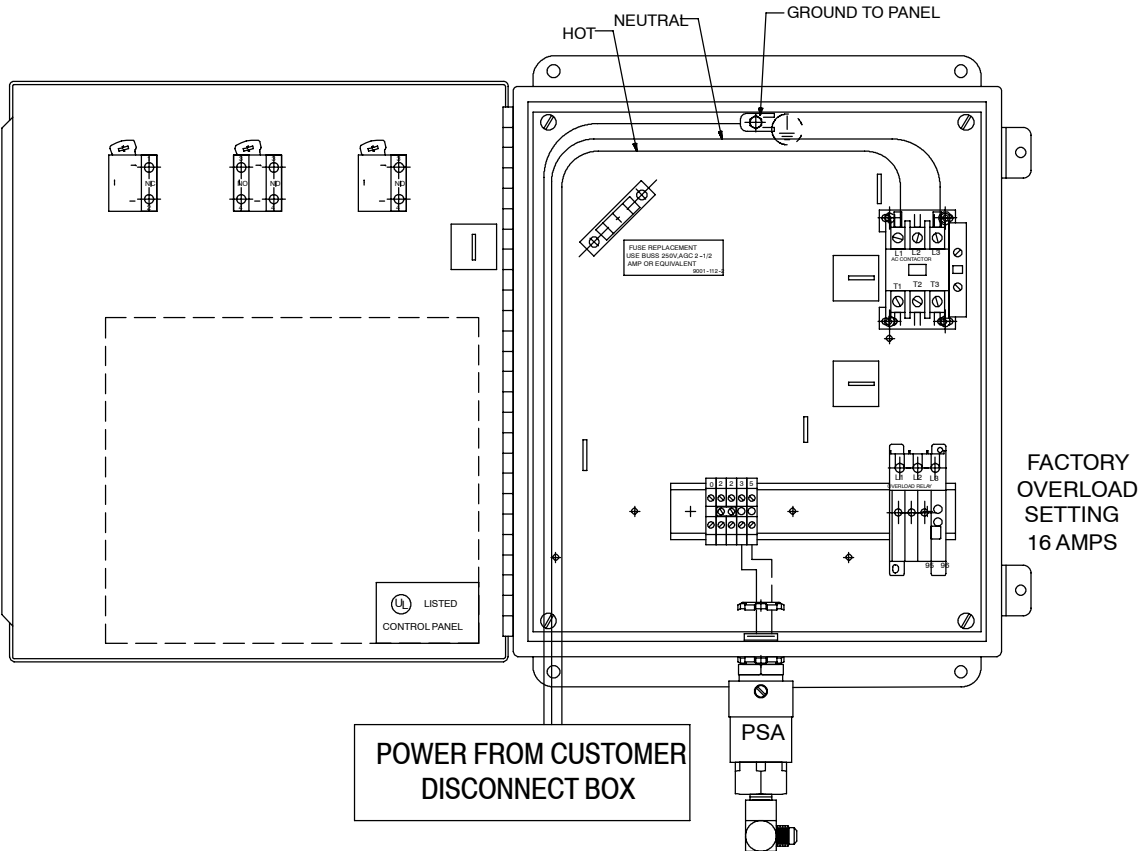
# HYDRAULIC SCHEMATIC -- 3 HORSEPOWER



# HYDRAULIC SCHEMATIC -- ONE HORSEPOWER

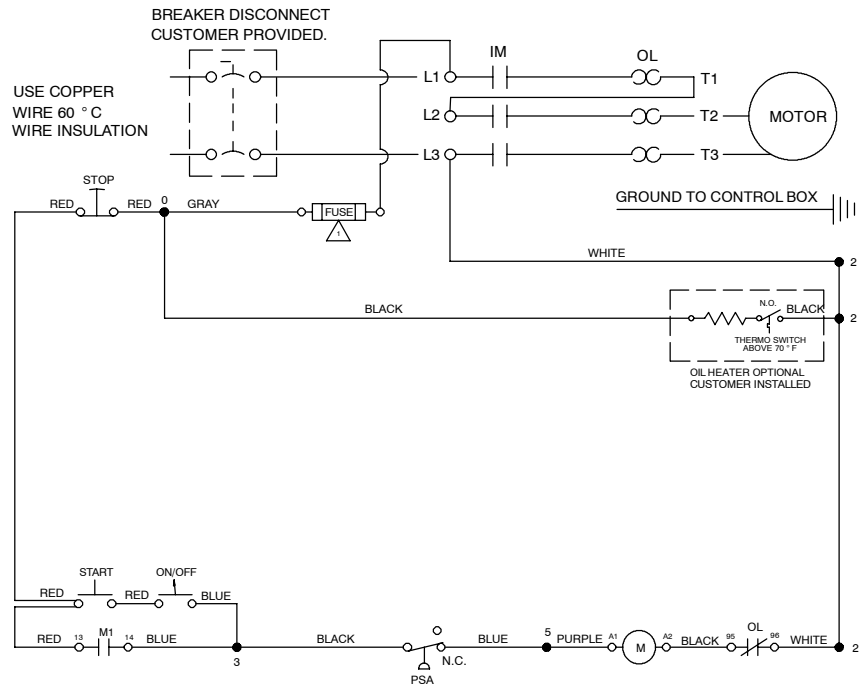


# 110 VOLT SINGLE PHASE POWER PANEL



Connection	Screw Size	Torque Inch-Lb. Min. - Max.
Line Terminals:	M4	9 - 13.3
Load Terminals:	M4	9 - 13.3
Control Terminals	M3.5	7 - 10.6
Auxiliary Terminals:	M3.5	7 - 9
Terminal Block:		7 - 9

## POWER PACK ELECTRICAL SCHEMATIC 1 HP SINGLE PHASE 110 VOLT (OIL HEATER OPTIONAL)



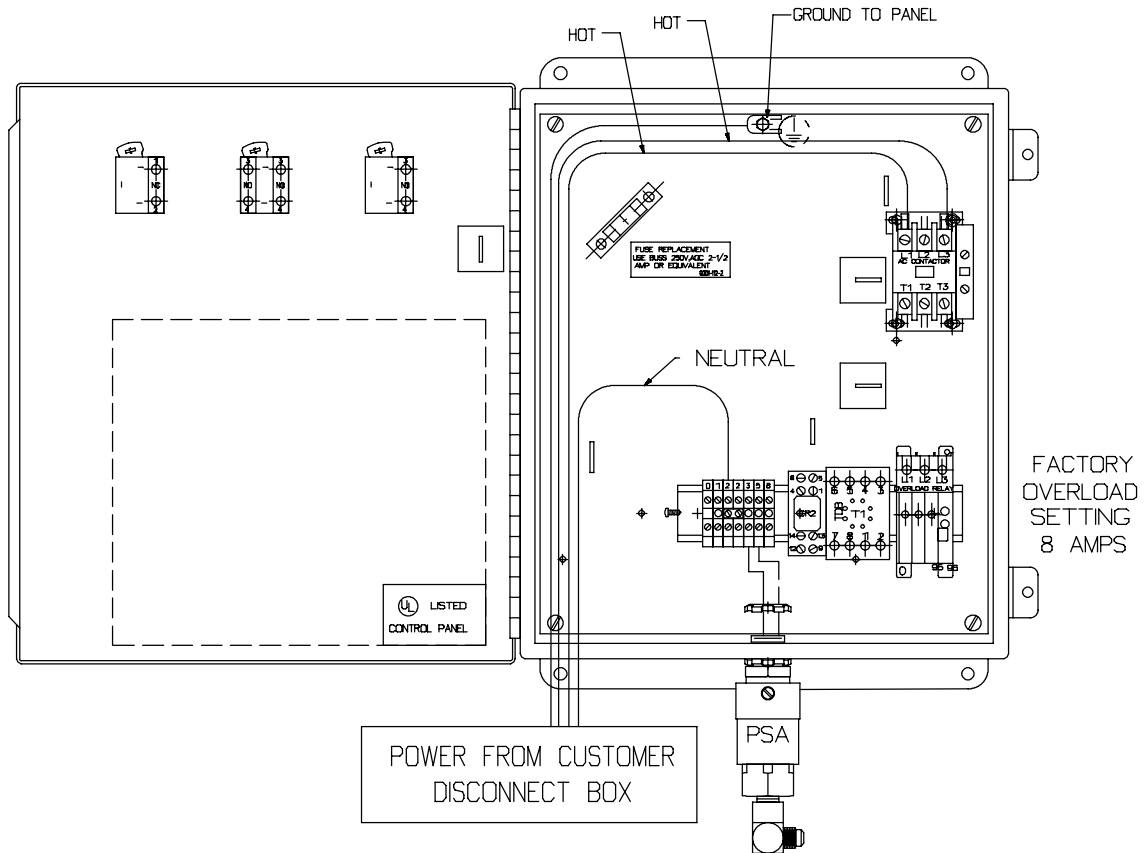
NOTE: Motor rotation must be clockwise. connect power leads to L1 & L3. check rotation of motor.

If counter-clockwise rotation is observed, wires in motor housing connector box must be interchanged per motor housing.

1 STANDARD: BUSS 250V FNM 2-1/2 AMP OR EQUIV.

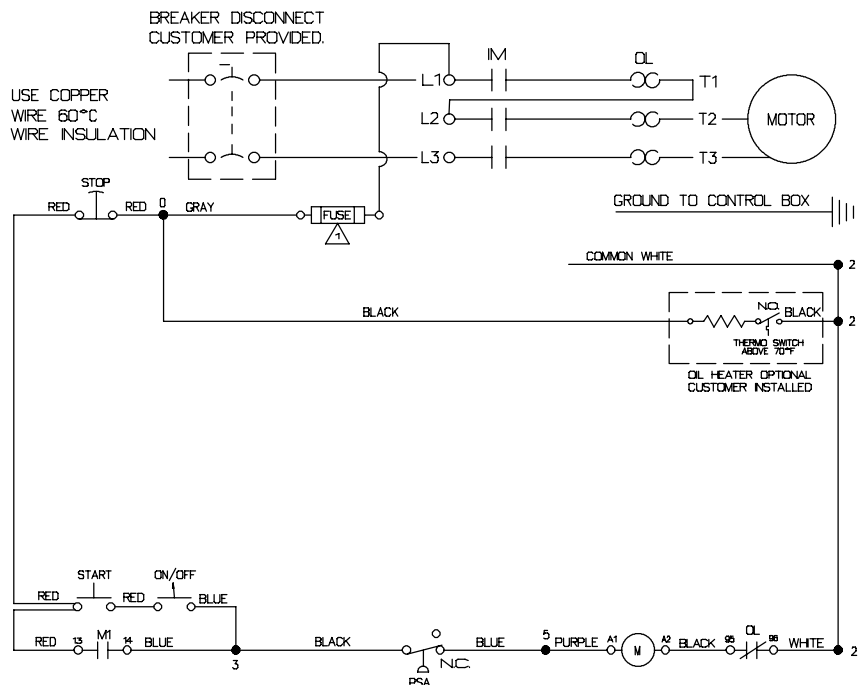
M9060-25  
REV. 8/4/06

# 220 VOLT SINGLE PHASE POWER PANEL



Connection	Screw Size	Torque Inch-Lb. Min. - Max.
Line Terminals:	M4	9 - 13.3
Load Terminals:	M4	9 - 13.3
Control Terminals:	M3.5	7 - 10.6
Auxiliary Terminals:	M3.5	7 - 9
Terminal Block:		7 - 9

## POWER PACK ELECTRICAL SCHEMATIC 1 HP SINGLE PHASE 220 VOLT (OIL HEATER OPTIONAL)



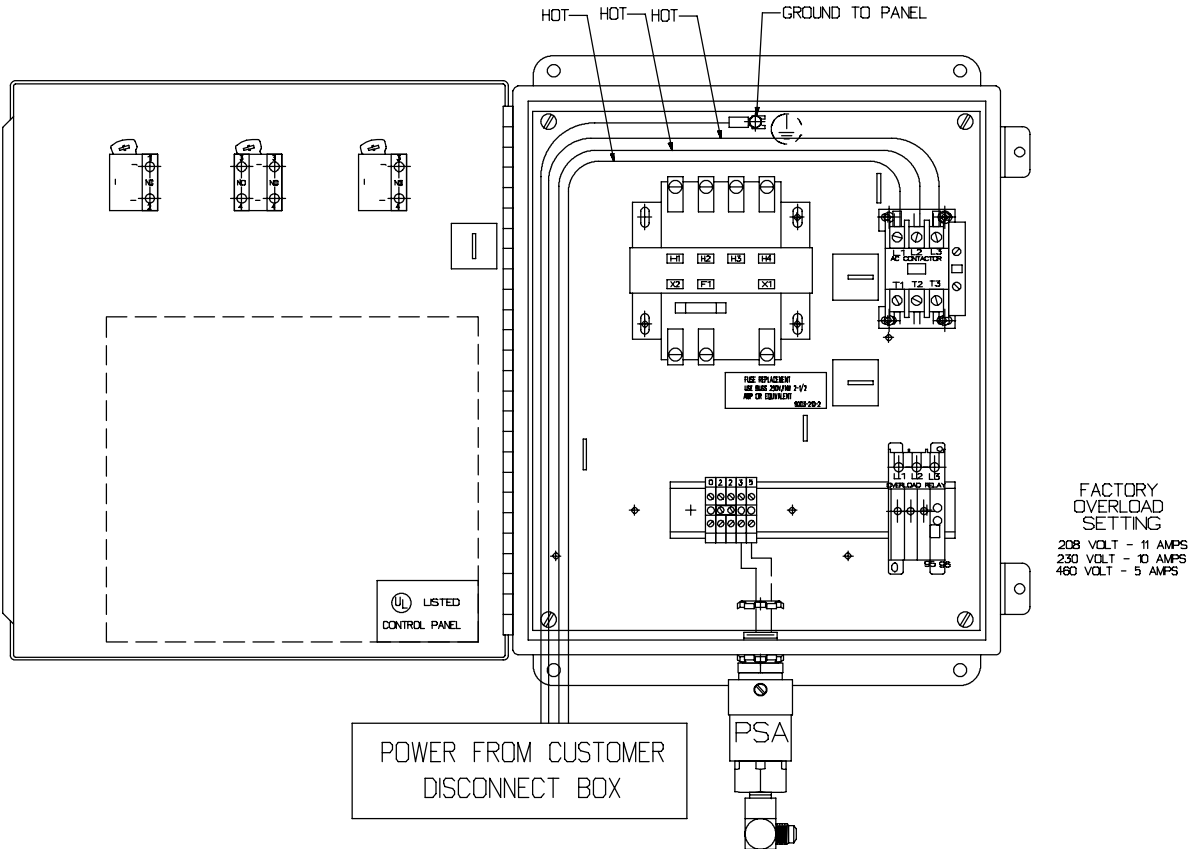
NOTE: Motor rotation must be clockwise.  
connect power leads to L1 & L3.  
check rotation of motor.

If counter-clockwise rotation is  
observed, wires in motor housing  
connector box must be interchanged  
per motor housing.

1 STANDARD: BUSS 250V FNM 2-1/2 AMP OR EQUIV.

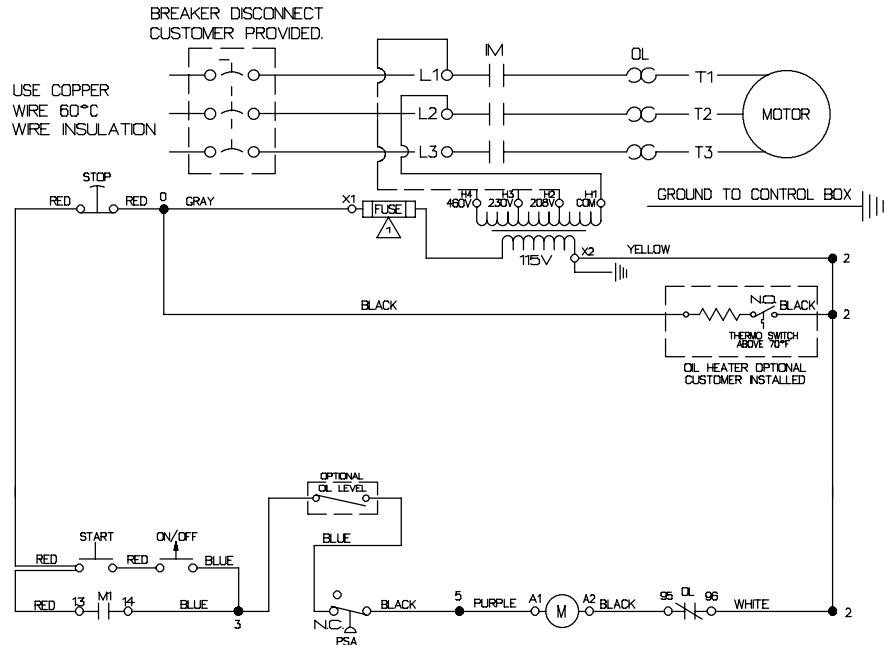
M9060-26  
REV. 8/4/06

# 208/230/460 VOLT 3HP 3-PHASE POWER PANEL



Connection	Screw Size	Torque Inch-Lb. Min. - Max.
Line Terminals:	M4	9 - 13.3
Load Terminals:	M4	9 - 13.3
Control Terminals:	M3.5	7 - 10.6
Auxiliary Terminals:	M3.5	7 - 9
Terminal Block:		7 - 9

## POWER PACK ELECTRICAL SCHEMATIC 3 HP THREE PHASE 208/230/460 VOLT (OIL HEATER OPTIONAL)



NOTE: Motor rotation must be clockwise. connect power leads to L1 & L3. check rotation of motor.

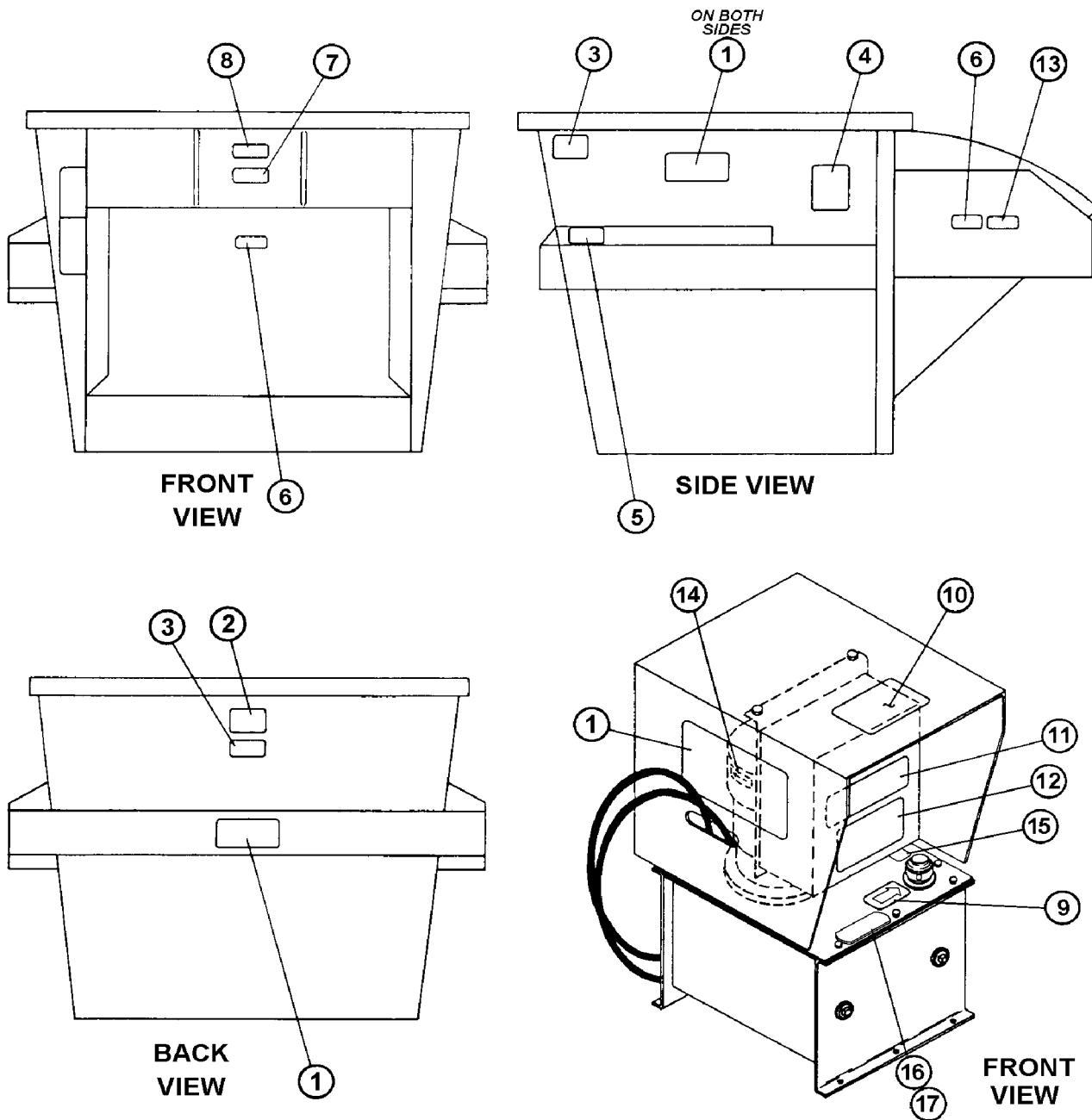
If counter-clockwise rotation is observed, switch any two of these three wires.

1 STANDARD: BUSS 250V FNM 2-1/2 AMP OR EQUIV.

M9060-27  
 Rev. 8/4/06



# FRONT LOAD COMPACTOR DECAL PLACEMENT



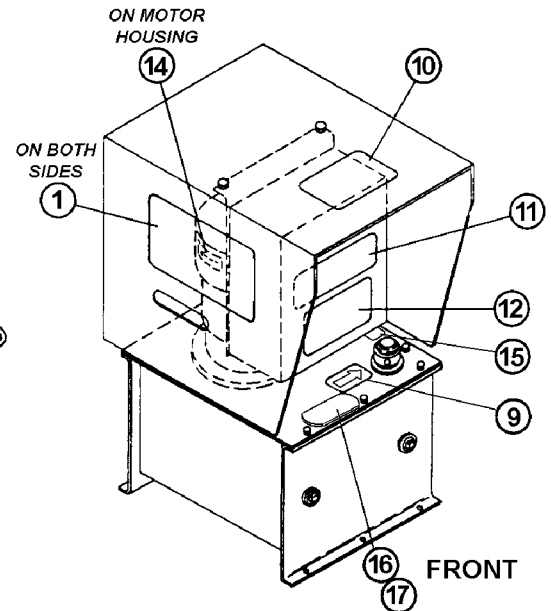
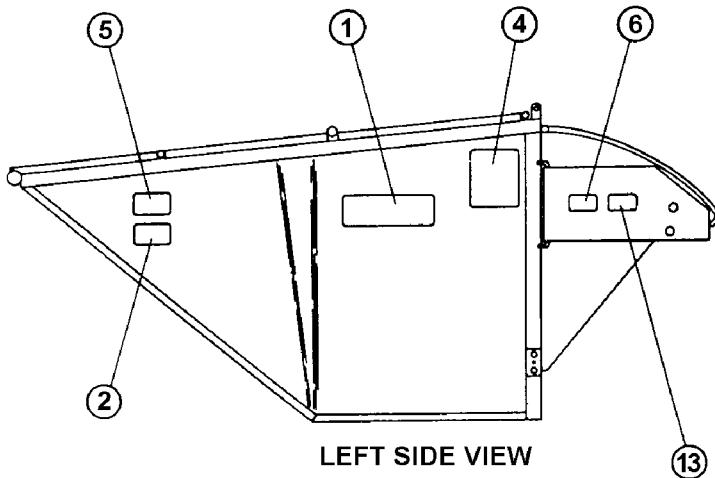
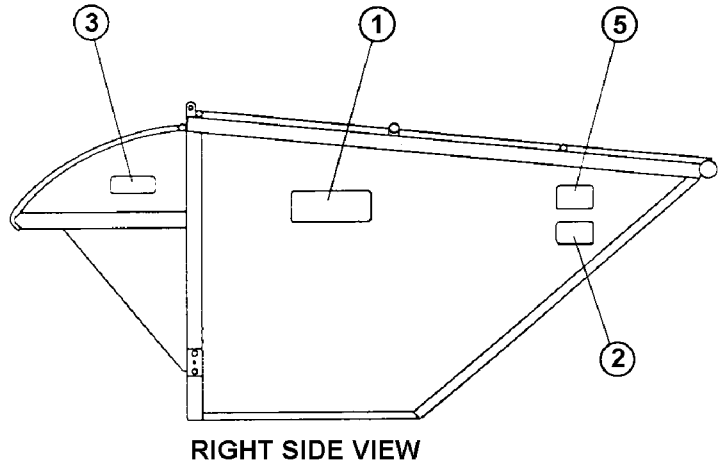
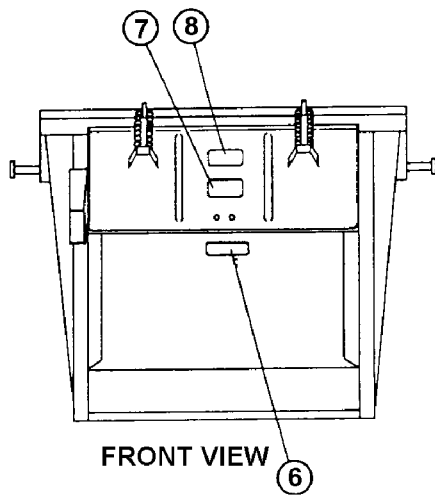
M9060-20  
Rev.10/96

## FOR MODELS - KP4F, KP6F

12/06

Item	Part Number	Part Description	Qty.	Item	Part Number	Part Description	Qty.
1	★ 74-266	K-PAC Decal	4	12	74-262	208 VOLTS Decal	1
2	★ 74-282	DANGER - Electric Line Decal	1		74-263	230 VOLTS Decal	1
3	★ 74-267	WARNING - Obstructions Decal	2		74-264	460 VOLTS Decal	1
4	★ 74-270	CAUTION - Operators Decal	1		74-280	110 VOLTS Decal	1
5	★ 74-268	WARNING - Do Not Stand Decal	1		74-281	220 VOLTS Decal	1
6	★ 74-272	WARNING - Door Closed Decal	2	13	★ 74-276	WARNING - High Pressure Decal	1
7	★ 74-271	WARNING - Opening Decal	1	14	74-275	Rotation Arrow Decal	1
8	★ 74-269	DANGER - Do Not Enter Decal	1	15	74-457	Dexron III Oil Decal	1
9	74-273	Oil Level Decal	1	16	74-335	K-PAC Serial No. Plate	1
10	74-274	WARNING - Do Not Operate Decal	1	17	62-100	#4 x 3/16 Grip Nail	2
11	74-265	DANGER - High Voltage Decal	1	★ Included in 9060-20-0 Decal Kit			

# REAR LOAD COMPACTOR DECAL PLACEMENT



M9060-21  
Rev.10/96

## FOR MODELS - KP6R

12/06

Item	Part Number	Part Description	Qty.	Item	Part Number	Part Description	Qty.
1	★ 74-266	K-PAC Decal	3	12	74-262	208 VOLTS Decal	1
2	★ 74-282	DANGER - Electric Line Decal	2		74-263	230 VOLTS Decal	1
3	★ 74-267	WARNING - Obstructions Decal	1		74-264	460 VOLTS Decal	1
4	★ 74-270	CAUTION - Operators Decal	1		74-280	110 VOLTS Decal	1
5	★ 74-268	WARNING - Do Not Stand Decal	2		74-281	220 VOLTS Decal	1
6	★ 74-272	WARNING - Door Closed Decal	2	13	★ 74-276	WARNING - High Pressure Decal	1
7	★ 74-271	WARNING - Opening Decal	1	14	74-275	Rotation Arrow Decal	1
8	★ 74-269	DANGER - Do Not Enter Decal	1	15	74-457	Dexron III Oil DecalP	1
9	74-273	Oil Level Decal	1	16	74-335	K-PAC Serial No. Plate	1
10	74-274	WARNING - Do Not Operate Decal	1	17	62-100	#4 x 3/16 Grip Nail	2
11	74-265	DANGER - High Voltage Decal	1	★ Included in 9060-20-0 Decal Kit			

# INSTRUCTION TO CONVERT 9003 (3-PHASE) POWER UNIT VOLTAGE (CANNOT convert Single Phase to 3-Phase)

1. What voltage to convert to? See Column I on the chart below.
  
2. What brand is the transformer? (Column I) Wiring is different because of different transformers.
  
3. Read conversion steps and chart below. Order parts as necessary.
  
4. Steps in making conversion. (All steps are very important)
  - A. Change motor starter to transformer wire on transformer to agree with the chart below for voltage desired. (See Columns II and III) This step gives the proper voltage to controls and oil heater.
  
  - B. Change overload relay per Column IV. This step is necessary for proper motor protection. NOTE: SAME RELAY IS USED FOR 208 VOLT and 230 VOLT (460 VOLT IS DIFFERENT).
  
  - C. Set amperage of overload relay per Column V. This step is necessary for proper motor protections. If the correct amperage cannot be set, check that the overload relay is correct.
  
  - D. Check wiring of control panel to motor at motor (*high voltage vs. low voltage*), and change to correspond if necessary. See nameplate on motor for correct wiring (208V and 230V are **low voltage**, 460V is **high voltage**).
  
  - E. Change electrical schematic per chart to agree with voltage converted to. (See Column VIII)
  
  - F. Change voltage decal on outside of control panel per chart. (See Column VI)
  
5. Re-check that all steps were taken and are correct before connecting to power. Check wire routing per electrical schematic.

I.	II.	VII.	III.		IV.	V.	VI.
TYPE	VOLTAGE	WIRE FROM STARTER TO TRANSFORMER	OVERLOAD RELAY		AMPERAGE SETTING	MOTOR WIRES	ELECTRICAL SCHEMATIC
			K- PAC	SIEMANS ALLIS #			
ACME	-----	L1 -- H1 COMMON	-----	-----	-----	See Motor Plate	-----
	208	L2 -- H2	79-244	3UA5000-IK	11		9003-208-0S
	230	L2 -- H3	79-244	3UA5000-IK	10		9003-230-0S
	460	L2 -- H4	79-245	3UA5000-IG	5		9003-460-0S

9060-100-3B  
Revised 8-92

# INSTRUCTION TO CONVERT 9001 (SINGLE-PHASE) POWER UNIT VOLTAGE (CANNOT convert Single Phase to 3-Phase)

1. What voltage to convert to? See Column I on the chart below.
  
2. Steps in making conversion. (All steps are very important)
  - A. Change relay and contactor per chart below (Column III). NOTE: The 6" red wire may be necessary between the contactor and the overload. OBSERVE wire routing when disassembling, and rewire the same way.

This step is necessary for proper motor protection.

- B. Rewire controls per proper electric schematic (Column VI). NOTE: 16" white wire from L3 to terminal strip #2 will be added or removed per schematic.
  
- C. Set overload relay to correct amperage (Column IV). This step is necessary for proper motor protection.
  
- D. Change leads from the control panel to the motor at the motor. (Column V) See plate on motor for instructions.
  
- E. Change wiring schematic in control panel. (Column VI)
  
- F. Change voltage on outside of control panel per chart. (Column II)

I.	II.	III.		IV.	V.	VI.	VII.
VOLTAGE	VOLTAGE DECAL	OVERLOAD RELAY		AMPERAGE SETTING	MOTOR WIRES	ELECTRICAL SCHEMATIC	WIRE
		K- PAC	SIEMANS ALLIS #				
110 - 220	74-280	79-251 79-247	3TB4210-0AA8 3UA52002B	16	See Motor Plate	9001-110-3 + 9001-110-0S	16" White 6" Red
220 - 240 Serial #1001-1517	74-281	79-243 79-244	3TB4110-0AA8 3UA5000-IK	8	See Motor Plate	9001-110-3 + 9001-220-0S	6" Red
220 - 240 Serial #1518 & On	74-281	79-251 79-362	3TB4210-0AA8 3UA5200-IK	8	See Motor Plate	9001-110-3 + 9001-220-0S	6" Red
208	74-262	79-251 79-362	3TB4210-0AA8 3UA5200-IK	9	See Motor Plate	9001-110-3 + 9001-220-0S	6" Red

3. Double check that all steps were taken and are correct before connecting to power. Check wire routing per proper electrical schematic.
  
4. Note wiring schematic 9001-115-0HS and 9001-225-0HS need to have 9001-110-3 clear seal for installation.

9001-100-1A  
Revised 8-92

**This page intentionally left blank.**